

# Verstekzagen van balken

Duidt eerst de figuur aan door gebruik te maken van de letter (bv. :  $H_2$ ). De belangrijkste afmetingen zijn de totale lengte ( $L$ ) en de hoeken links ( $\alpha$ ) en rechts ( $\beta$ ). De afschuiningen links ( $L_2$ ) en rechts ( $L_3$ ) zijn eveneens nuttig voor de controle.

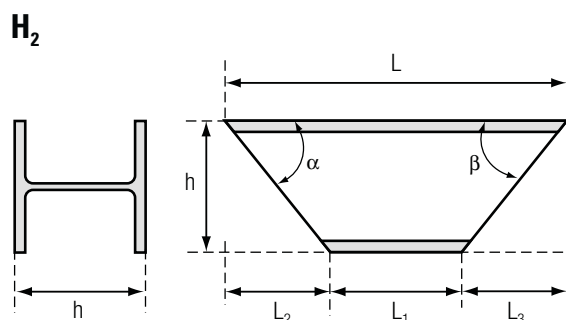
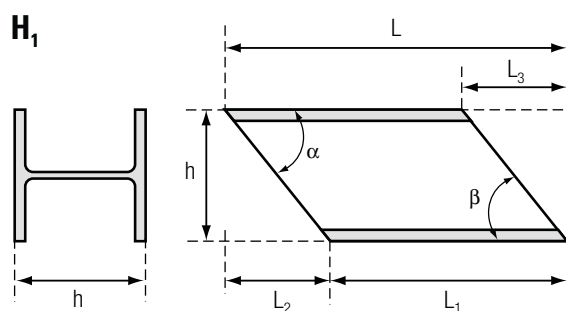
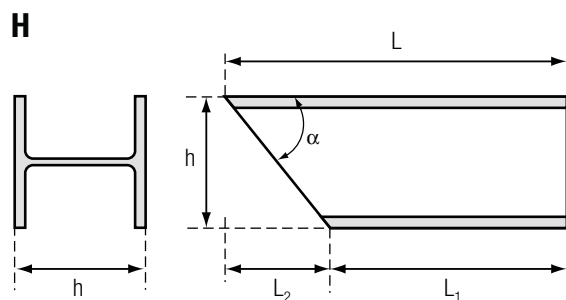
*Voorbeeld :*

HEA 100 (figuur)  $H_2$   $L$ : 4 m,  $\alpha$ :  $45^\circ$ ,  $\beta$ :  $60^\circ$  ( $L_2$ : 100 mm,  $L_3$ : 57,735 mm)

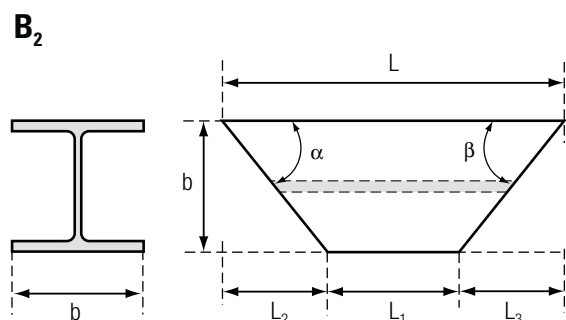
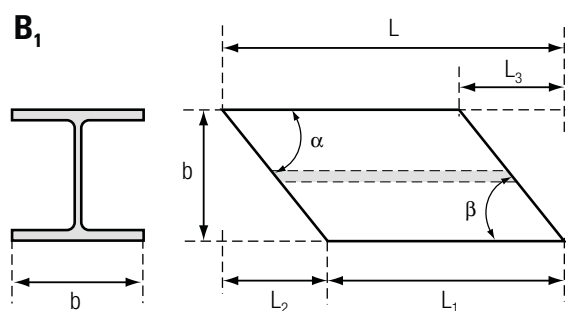
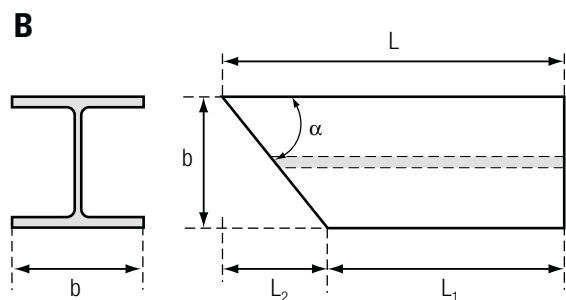
*Berekening afschuining :*

$$L_2 = h \times \text{tg} (90^\circ - \alpha) \quad L_3 = h \times \text{tg} (90^\circ - \beta)$$

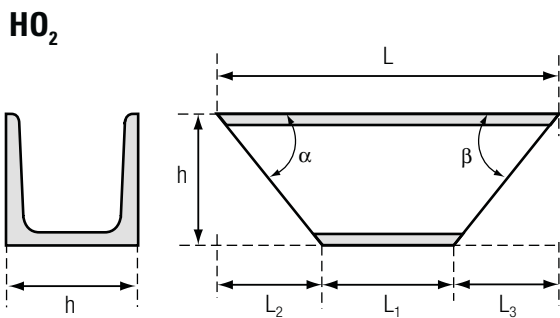
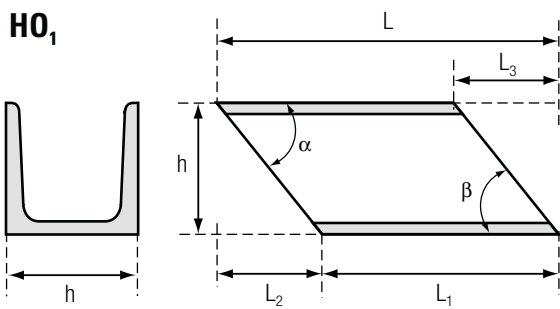
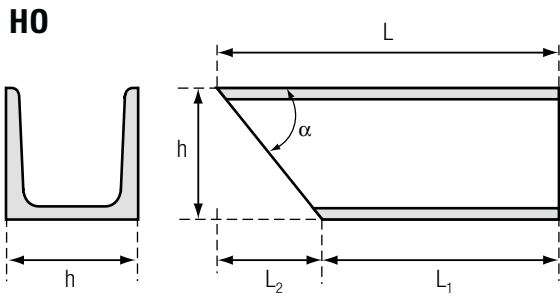
## LIGGEND VERSTEK I- OF H-BALKEN



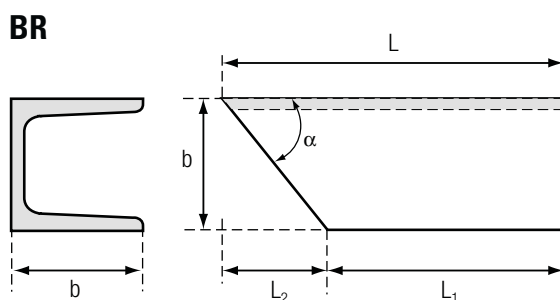
## STAAND VERSTEK I- OF H-BALKEN



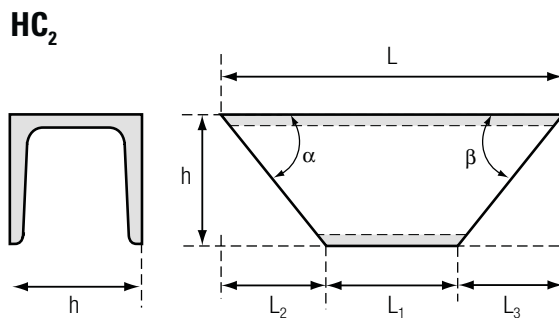
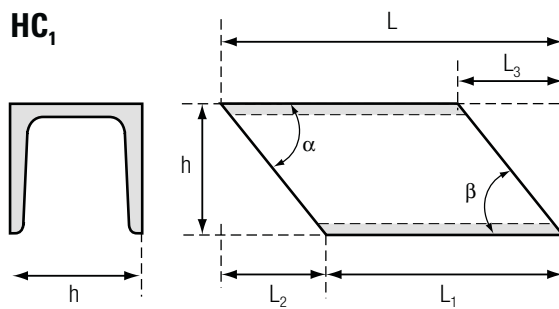
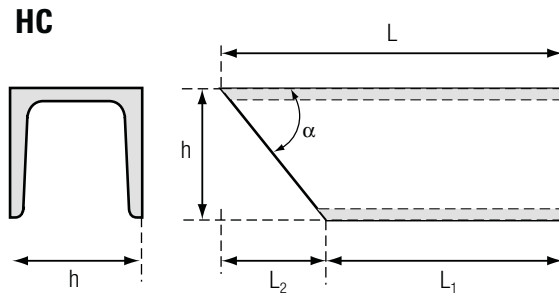
**OPEN LIGGEND VERSTEK  
U-PROFIEL**



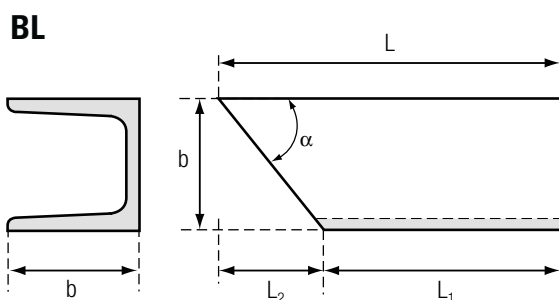
**RECHTS GEOPEND STAAND VERSTEK  
U-PROFIEL**



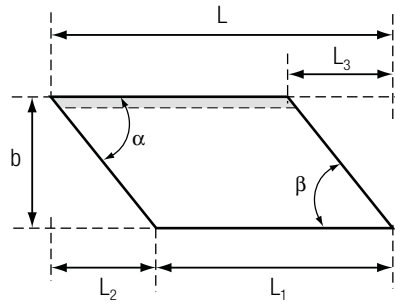
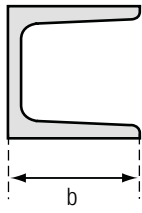
**GESLOTEN LIGGEND VERSTEK  
U-PROFIEL**



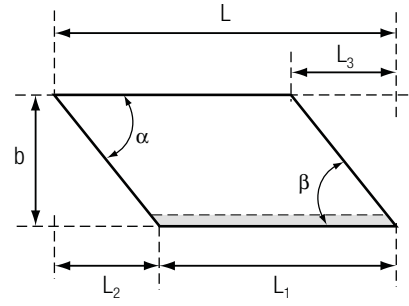
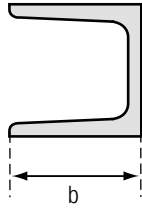
**LINKS GEOPEND STAAND VERSTEK  
U-PROFIEL**



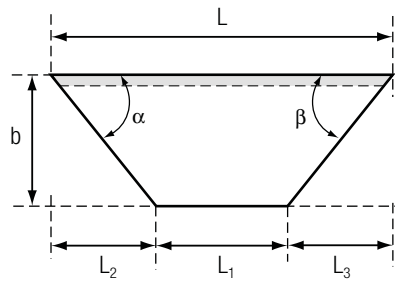
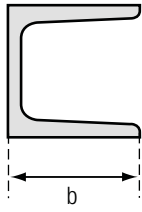
**BR<sub>1</sub>**



**BL<sub>1</sub>**



**BR<sub>2</sub>**



**BL<sub>2</sub>**

