



4. Letternetten

E-NETTEN

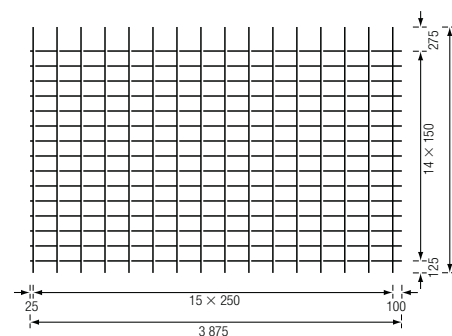
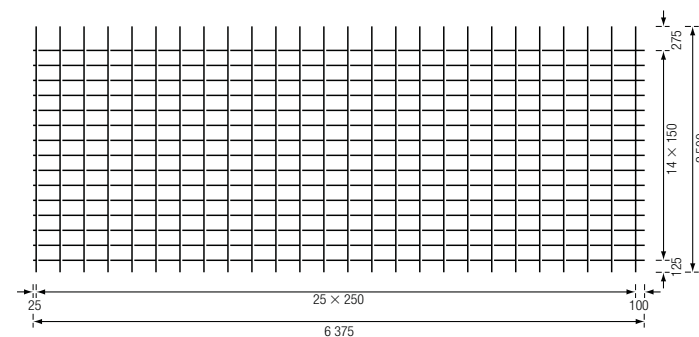
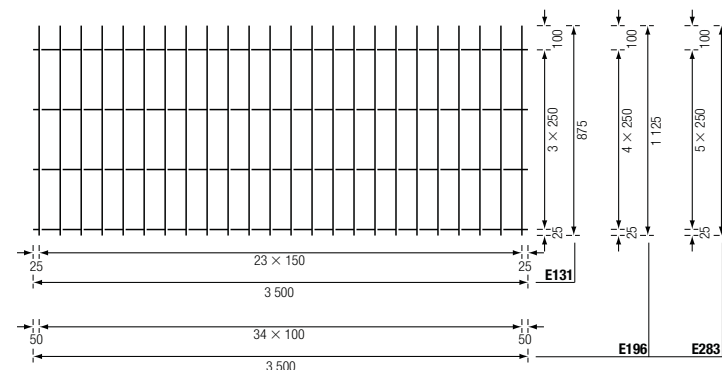
Type	Langs-wapening maas – diam.	Dwars-wapening maas – diam.	Lengte	Breedte	Gewicht	Aantal per pak
	mm	mm	mm	mm	kg	stuks
E 131	250 – 5,0	150 – 5,0	3500	875	5,39	100
E 196	250 – 5,0	100 – 5,0	3500	1125	8,76	100
E 283	250 – 5,0	100 – 6,0	3500	1375	13,92	100

G-NETTEN

Type	Langs-wapening maas – diam.	Dwars-wapening maas – diam.	Lengte	Breedte	Gewicht	Aantal per pak
	mm	mm	mm	mm	kg	stuks
G 295	150 – 7,5	250 – 5,0	6375	2500	43,19	40
G 335	150 – 8,0	250 – 5,0	6375	2500	47,78	40
G 424	150 – 9,0	250 – 5,5	6375	2500	59,87	30
G 524	150 – 10,0	250 – 6,0	6375	2500	73,43	20
G 754	150 – 12,0	250 – 7,0	6375	2500	104,55	20

K-NETTEN

Type	Langs-wapening maas – diam.	Dwars-wapening maas – diam.	Lengte	Breedte	Gewicht	Aantal per pak
	mm	mm	mm	mm	kg	stuks
K 189	150 – 6,0	250 – 5,0	3875	2500	19,06	50
K 257	150 – 7,0	250 – 5,0	3875	2500	23,71	50
K 295	150 – 7,5	250 – 5,0	3875	2500	26,33	50
K 335	150 – 8,0	250 – 5,0	3875	2500	29,12	50
K 424	150 – 9,0	250 – 5,5	3875	2500	36,48	50
K 524	150 – 10,0	250 – 6,0	3875	2500	44,74	40
K 634	150 – 11,0	250 – 6,5	3875	2500	53,76	30
K 754	150 – 12,0	250 – 7,0	3875	2500	63,7	30





L-NETTEN

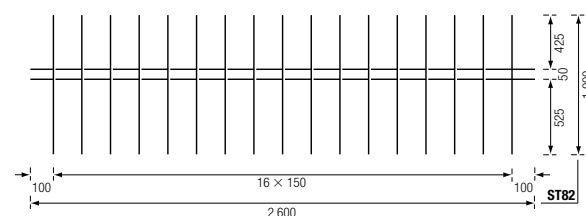
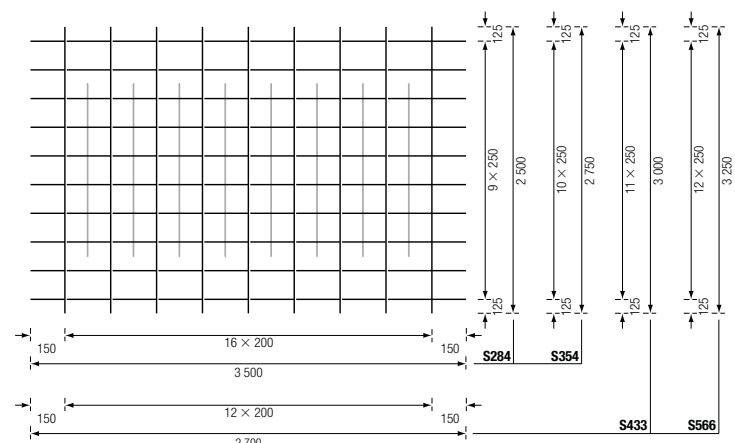
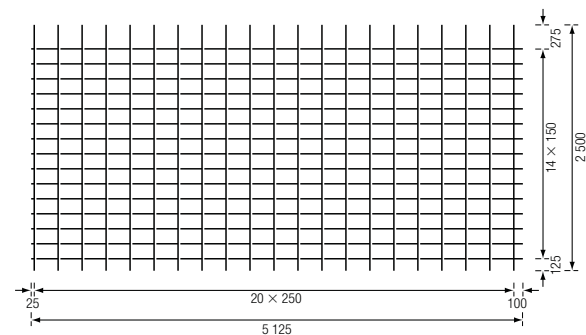
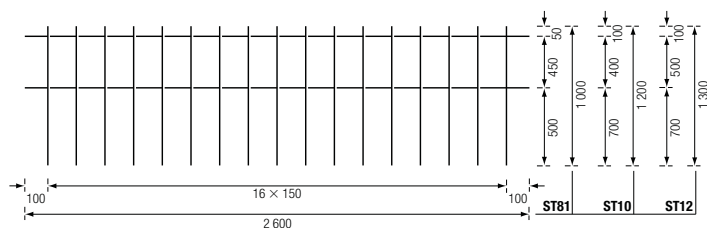
Type	Langs-wapening maas – diam.	Dwars-wapening maas – diam.	Lengte	Breedte	Gewicht	Aantal per pak
	mm	mm	mm	mm	kg	stuks
L 189	150 – 6,0	250 – 5,0	5125	2500	25,15	50
L 295	150 – 7,5	250 – 5,0	5125	2500	34,76	50
L 378	150 – 8,5	250 – 5,0	5125	2500	42,29	40
L 524	150 – 10,0	250 – 6,0	5125	2500	59,09	30
L 754	150 – 12,0	250 – 7,0	5125	2500	84,12	20

S-NETTEN

Type	Langs-wapening maas – diam.	Dwars-wapening maas – diam.	Lengte	Breedte	Gewicht	Aantal per pak	Reductie
	mm	mm	mm	mm	kg	stuks	mm
S 284	250 – 5,0	200 – 8,5	3500	2500	20,74	50	2 x 500
S 354	250 – 5,5	200 – 9,5	3500	2750	28,30	50	2 x 550
S 433	250 – 6,0	200 – 10,5	3500	3000	37,48	40	2 x 600
S 566	250 – 7,0	200 – 12,5	2700	3250	40,13	40	2 x 750

ST-NETTEN

Type	Langs-wapening maas – diam.	Dwars-wapening maas – diam.	Lengte	Breedte	Gewicht	Aantal per pak	Wapenings-dsn.
	mm	mm	mm	mm	kg	stuks	mm
ST 81	450 – 5	150 – 8	2600	1000	7,52	50	335 mm ² /m ¹
ST 82	50 – 5	150 – 8	2600	1000	7,52	50	335 mm ² /m ¹
ST 10	400 – 6	150 – 10	2600	1200	13,74	50	524 mm ² /m ¹
ST 12	500 – 7	150 – 12	2600	1300	21,20	50	754 mm ² /m ¹





TP-VOEGNETTEN

Type	Langs-wapening maas – diam.	Dwars-wapening maas – diam.	Lengte	Breedte	Gewicht
	mm	mm	mm	mm	kg
TP 8	100 – 5,0	150 – 8,0	2400	800	5,80
TP 10	100 – 6,0	150 – 10,0	2400	1000	10,94

U-NETTEN

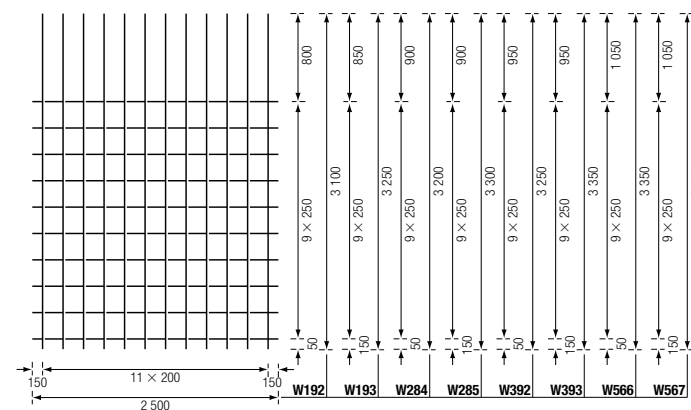
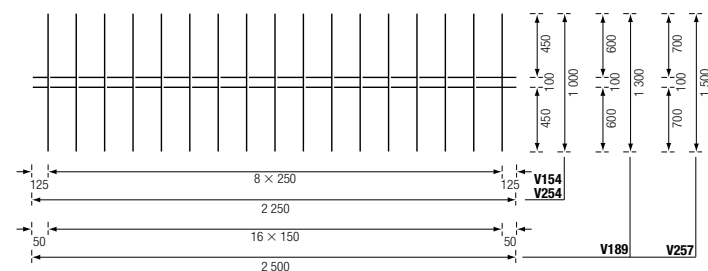
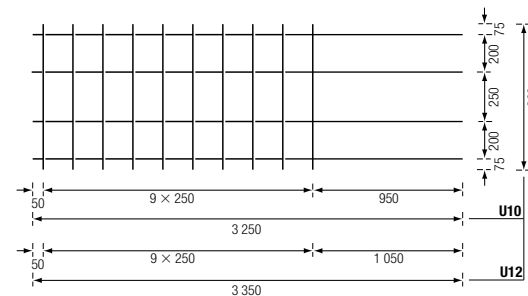
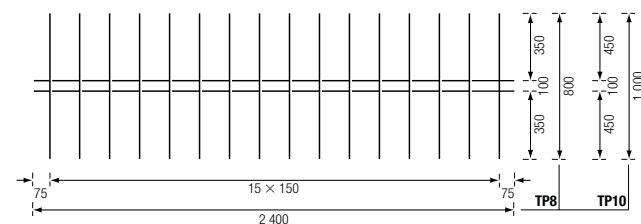
Type	Langs-wapening maas – diam.	Dwars-wapening maas – diam.	Lengte	Breedte	Gewicht	Aantal per pak
	mm	mm	mm	mm	kg	stuks
U 10	200 – 10,0	250 – 6,0	3250	800	9,8	40
U 12	200 – 12,0	250 – 7,0	3350	800	14,31	30

V-NETTEN

Type	Langs-wapening maas – diam.	Dwars-wapening maas – diam.	Lengte	Breedte	Gewicht	Aantal per pak
	mm	mm	mm	mm	kg	stuks
V 154	100 – 5,0	250 – 7,0	2250	1000	3,41	100
V 189	100 – 5,0	150 – 6,0	2500	1300	5,68	100
V 254	100 – 6,0	250 – 9,0	2250	1000	5,49	50
V 257	100 – 5,0	150 – 7,0	2500	1500	8,47	50

W-NETTEN

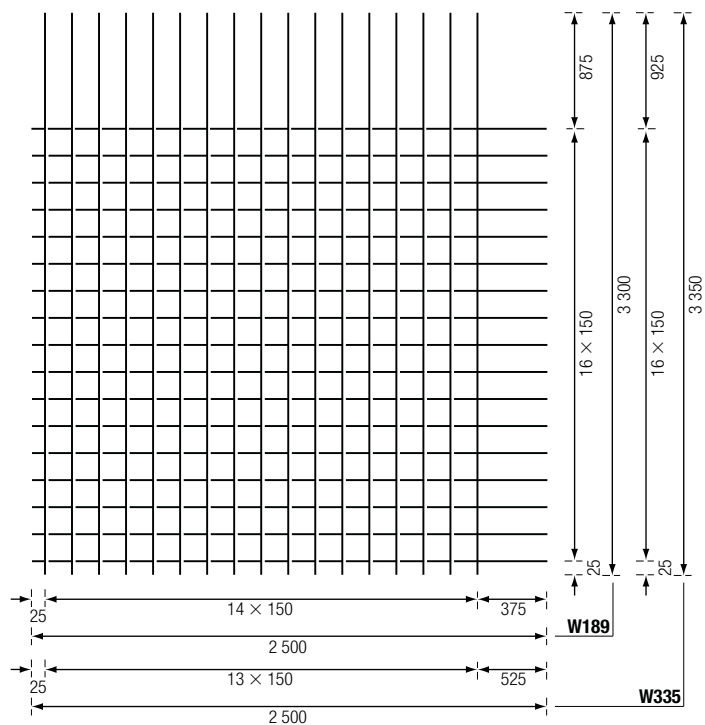
Type	Langs-wapening maas – diam.	Dwars-wapening maas – diam.	Lengte	Breedte	Gewicht	Aantal per pak
	mm	mm	mm	mm	kg	stuks
W 192	200 – 7,0	250 – 5,0	3100	2500	15,08	50
W 284	200 – 8,0	250 – 5,0	3200	2500	20,94	50
W 392	200 – 10,0	250 – 6,0	3250	2500	29,61	50
W 566	200 – 12,0	250 – 7,0	3350	2500	43,25	40
W 193	200 – 7,0	250 – 5,0	3250	2500	15,63	50
W 285	200 – 8,5	250 – 5,0	3300	2500	21,51	50
W 393	200 – 10,0	250 – 6,0	3350	2500	30,35	50
W 567	200 – 12,0	250 – 7,0	3450	2500	44,31	40





W-NETTEN

Type	Langs-wapening maas – diam.	Dwars-wapening maas – diam.	Lengte	Breedte	Gewicht	Aantal per pak
	mm	mm	mm	mm	kg	stuks
W 189	150 – 6,0	150 – 6,0	3300	2500	20,42	50
W 335	150 – 8,0	150 – 8,0	3350	2500	35,31	50



Z-NETTEN

Type	Langs-wapening maas – diam.	Dwars-wapening maas – diam.	Lengte	Breedte	Gewicht	Aantal per pak
	mm	mm	mm	mm	kg	stuks
Z 257	150 – 7,0	250 – 5,0	5375	2500	32,82	50
Z 335	150 – 8,0	250 – 5,0	5375	2500	40,32	40
Z 424	150 – 9,0	250 – 5,5	5375	2500	50,52	40

