

Verstekzagen van balken

Duidt eerst de figuur aan door gebruik te maken van de letter (bv. : H_2). De belangrijkste afmetingen zijn de totale lengte (L) en de hoeken links (α) en rechts (β). De afschuiningen links (L_2) en rechts (L_3) zijn eveneens nuttig voor de controle.

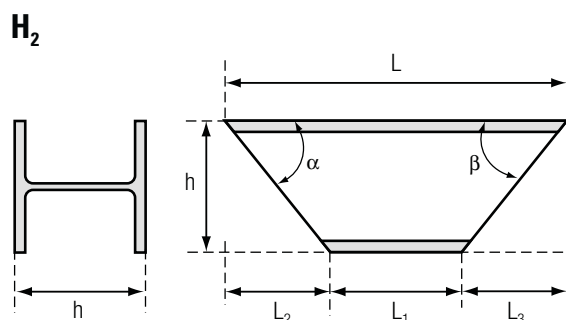
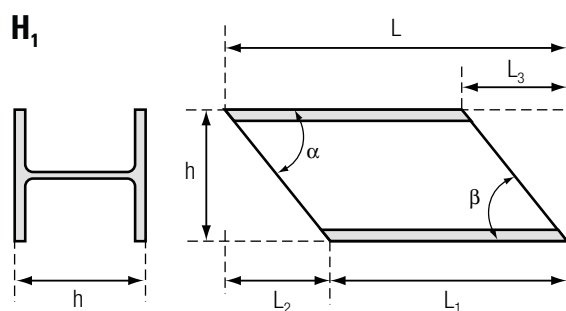
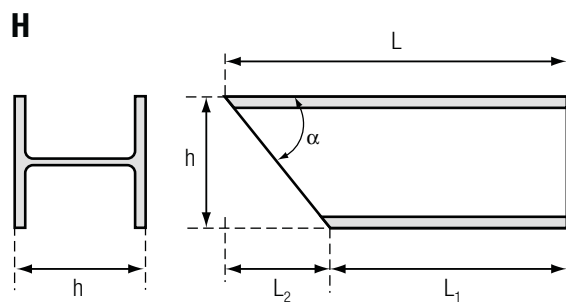
Voorbeeld :

HEA 100 (figuur) H_2 L : 4 m, α : 45° , β : 60° (L_2 : 100 mm, L_3 : 57,735 mm)

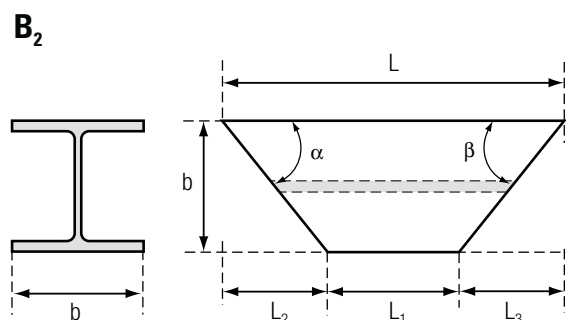
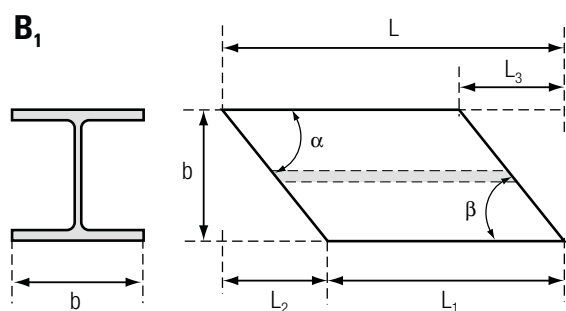
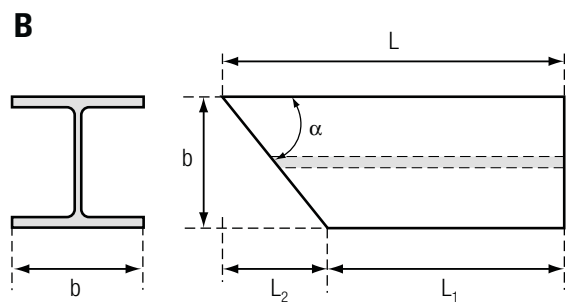
Berekening afschuining :

$$L_2 = h \times \text{tg} (90^\circ - \alpha) \quad L_3 = h \times \text{tg} (90^\circ - \beta)$$

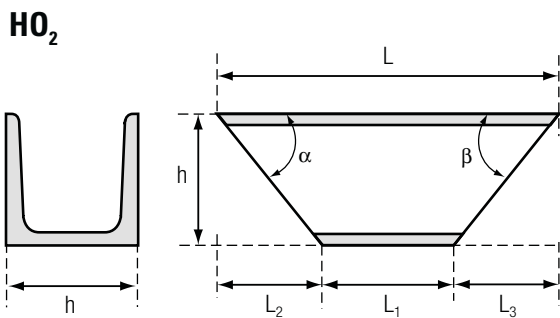
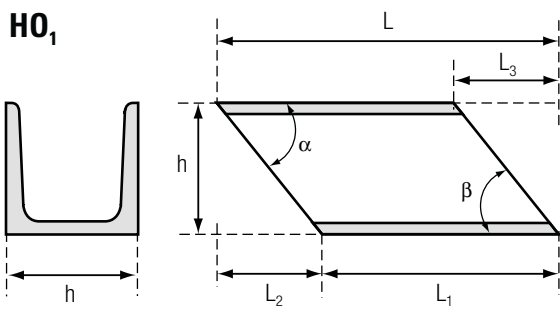
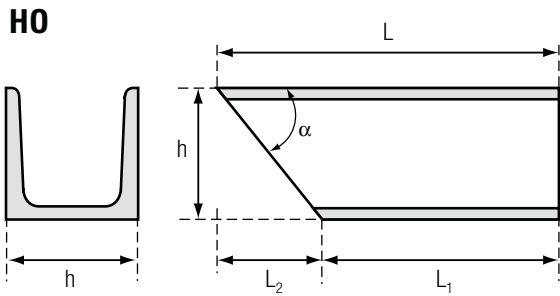
LIGGEND VERSTEK I- OF H-BALKEN



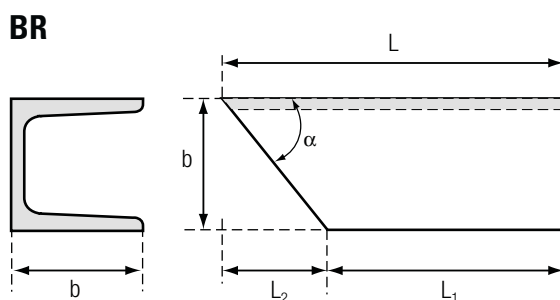
STAAND VERSTEK I- OF H-BALKEN



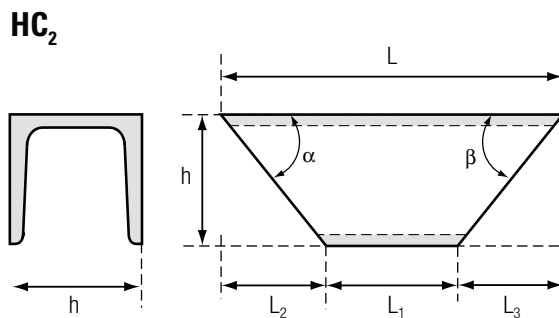
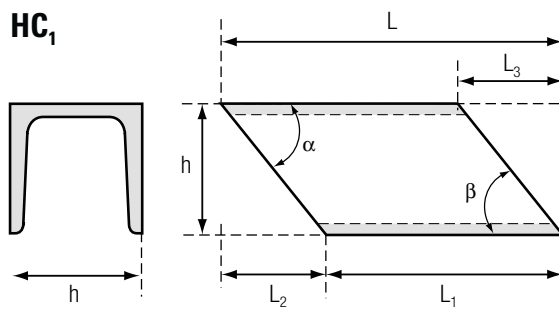
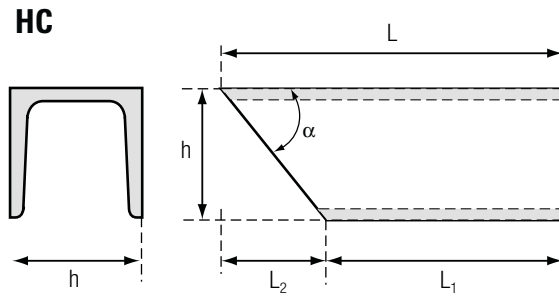
**OPEN LIGGEND VERSTEK
U-PROFIEL**



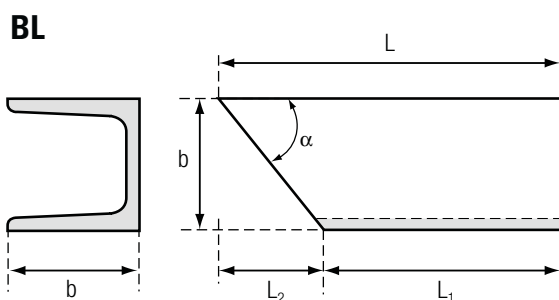
**RECHTS GEOPEND STAAND VERSTEK
U-PROFIEL**



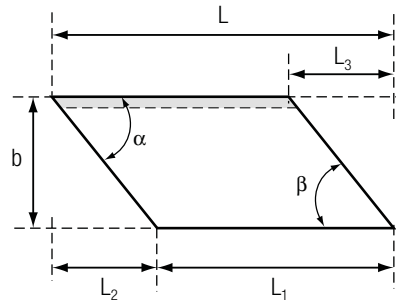
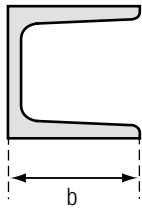
**GESLOTEN LIGGEND VERSTEK
U-PROFIEL**



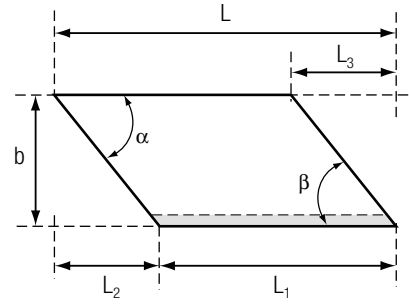
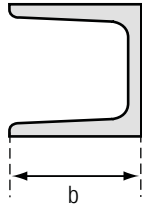
**LINKS GEOPEND STAAND VERSTEK
U-PROFIEL**



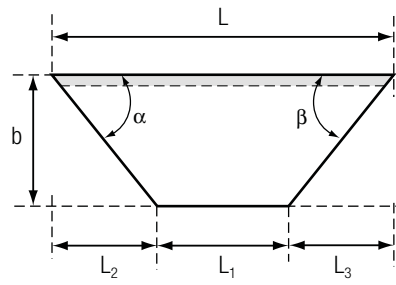
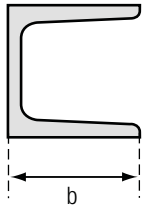
BR₁



BL₁



BR₂



BL₂

